



Passage Richelieu

M
Palais-Royal
Musée du Louvre

Pyramid
Main entrance

Carrousel
entrance

Rue de Rivoli

MUSEUM MAP

WELCOME

Porte
des Arts

Tuileries
Garden

Porte
des Lions

The river Seine



© Aristéas 2016

LOUVRE

WELCOME TO THE LOUVRE

The origin of the Louvre dates back to the 1200s. Once a royal residence, it became a museum in 1793 during the French Revolution and is now home to artworks dating from the 7th millennium BC to the 1850s. **The collections are displayed on 5 levels, in 3 interconnecting wings** named after three prominent figures from French history: **Richelieu** (1585–1642), chief minister of King Louis XIII, **Sully** (1559–1641), chief minister of King Henri IV, and **Denon** (1747–1825), first director of the Musée du Louvre.



SULLY WING – LEVELS -1, 1 AND 2

The Pavillon de l'Horloge

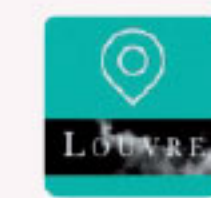
Intended to serve as an introduction to your visit, the Pavillon de l'Horloge will help you understand the history of the Louvre palace and the presentation of the museum's collections. You will see how the original medieval fortress became a museum (Level -1), discover the diversity of its collections with a selection of artworks (Level 1) and be updated with its latest news (Level 2).

PRACTICAL INFORMATION



Louvre Audio Guide

€5 rental of an Audio Guide (on Nintendo 3DS™ XL) at the museum's ticket area; collect your guide on Level -1



Louvre App: My Visit to the Louvre

Download our free App



Activities, tours and workshops

Group reception area under the Pyramid, Level -2



Walking sticks, folding stools, pushchairs, baby carriers and wheelchairs are available free of charge for visitors who need them. Visitor assistance area, Level -2



Cafés and restaurant

'Paul', a French-style bakery; the 'Angelina' tearoom (with terrace); the Bistrot Benoit, a restaurant with traditional French cuisine; cafeterias, takeaways and cafés (some with a terrace).



Bookshop – museum shops

The main book and gift shop in the Allée du Grand Louvre is open on Mondays, Thursdays, Saturdays and Sundays until 7 p.m. and on Wednesdays and Fridays until 9:45 p.m.



Follow us on social media to keep up to date with life at the Louvre.



Museum

Open daily except Tuesdays from 9 a.m. to 6 p.m. and until 9:45 p.m. on Wednesdays and Fridays. Rooms begin closing at 5:30 p.m., and at 9:30 p.m. on Wednesdays and Fridays.

To improve the visitor experience, the museum started work on a major renovation project three years ago. However, access is guaranteed to 90% of the permanent collections on weekdays and 100% at weekends. Information: +33 (0)1 40 20 53 17

Dominique-Vivant Denon Research Centre (Porte des Arts)

A research and resource centre, open to individuals on Wednesdays, Thursdays and Fridays, 1 p.m.–5 p.m.

Viewing room for prints and drawings (Porte des Lions)

From Monday to Friday from 1 p.m. to 6 p.m., by prior request. Contact: cabinet-des-dessins@louvrefr

LOUVRE

RICHELIEU WING



Petite Galerie



LEVEL -1
The Petite Galerie
Learn to enjoy and understand art, its history and its techniques. From October to June every year, the Petite Galerie proposes a new theme as a starting point for an exploration of the whole museum.



LEVELS -1 AND 0
Sculptures / France
(500–1850)



LEVEL 0
Near Eastern Antiquities
Mesopotamia, Iran
(5000 BC–AD 700)



LEVEL 1
Decorative Arts / Europe
(500–1850)



LEVEL 2
Paintings / Northern Europe
(1350–1850)



LEVEL 2
Paintings / France
(1350–1650)

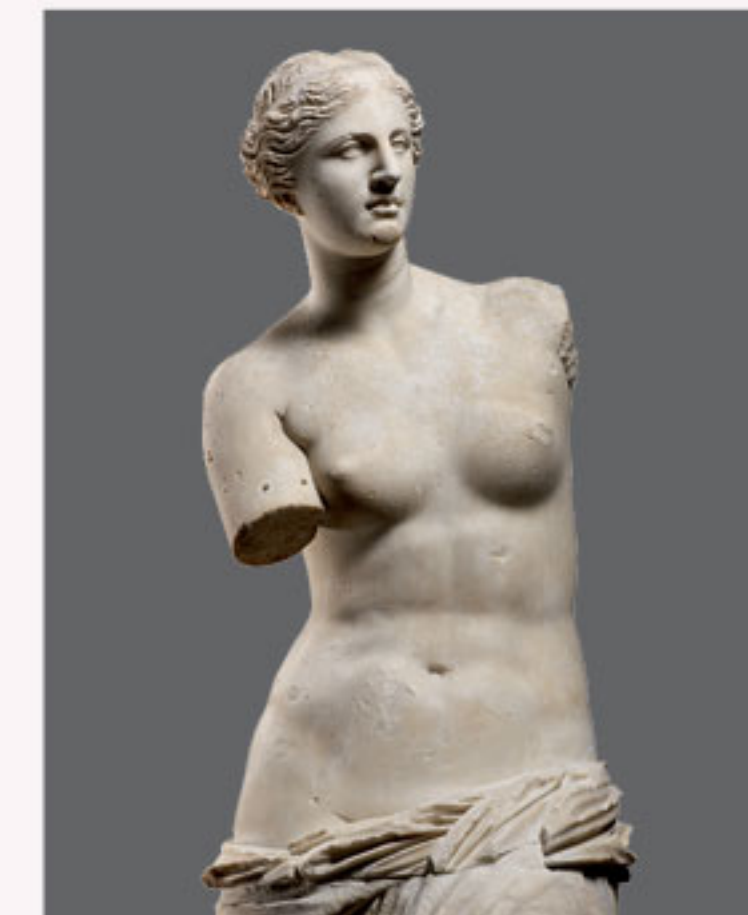
SULLY WING



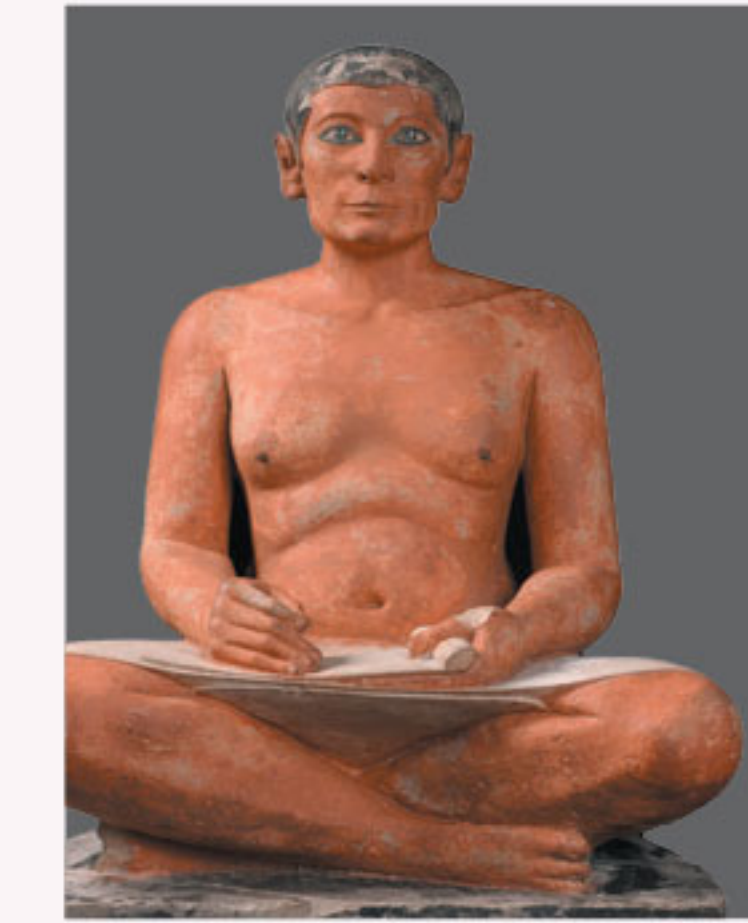
LEVEL -1
Cabinet of Prints and Drawings



LEVEL 0
Near Eastern Antiquities
Iran, the Levant, Arabia
(7500 BC–AD 700)



LEVEL 0
Greek Antiquities
(500–30 BC)



LEVELS 0 ET 1
Egyptian Antiquities
(4000–30 BC)



LEVEL 1
Decorative Arts / Europe
(1650–1800)

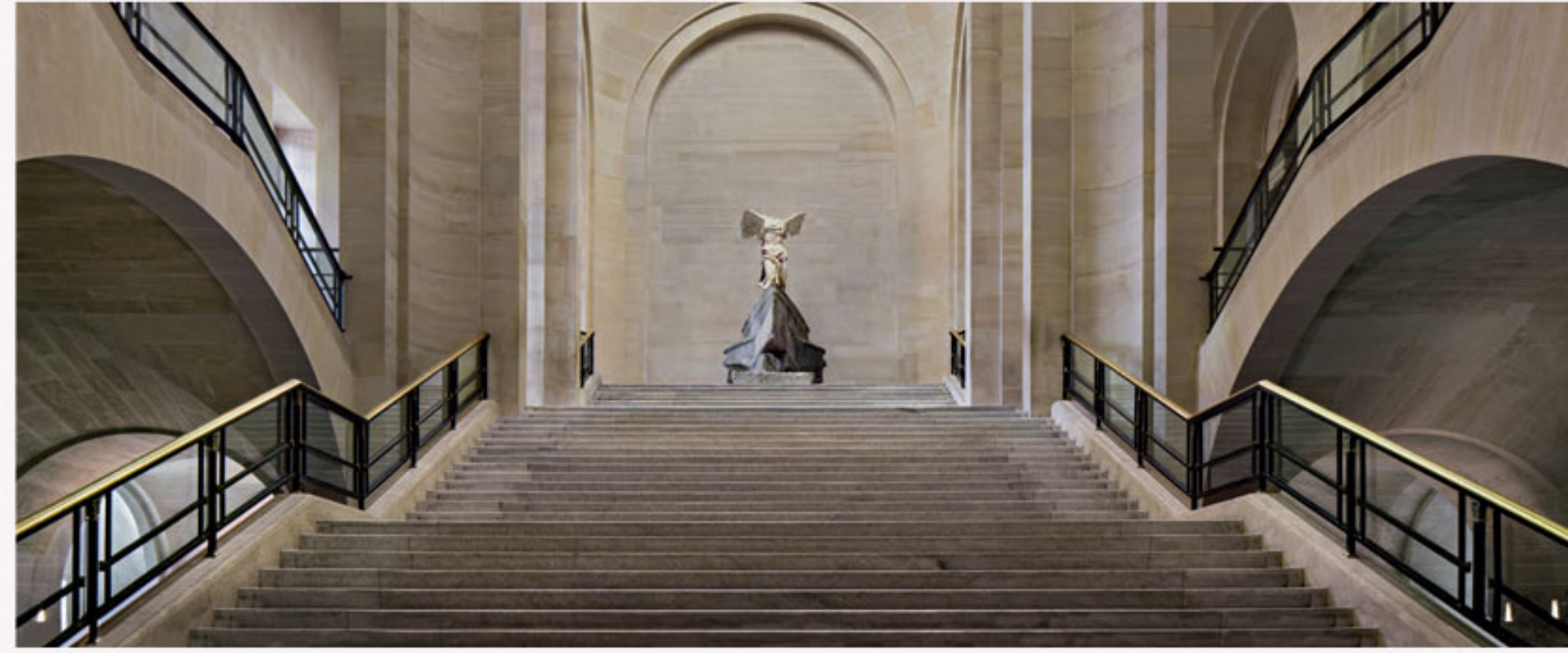


LEVEL 1
Greek and Roman Antiquities
(700 BC–AD 500)



LEVEL 2
Paintings / France
(1650–1850)

DENON WING



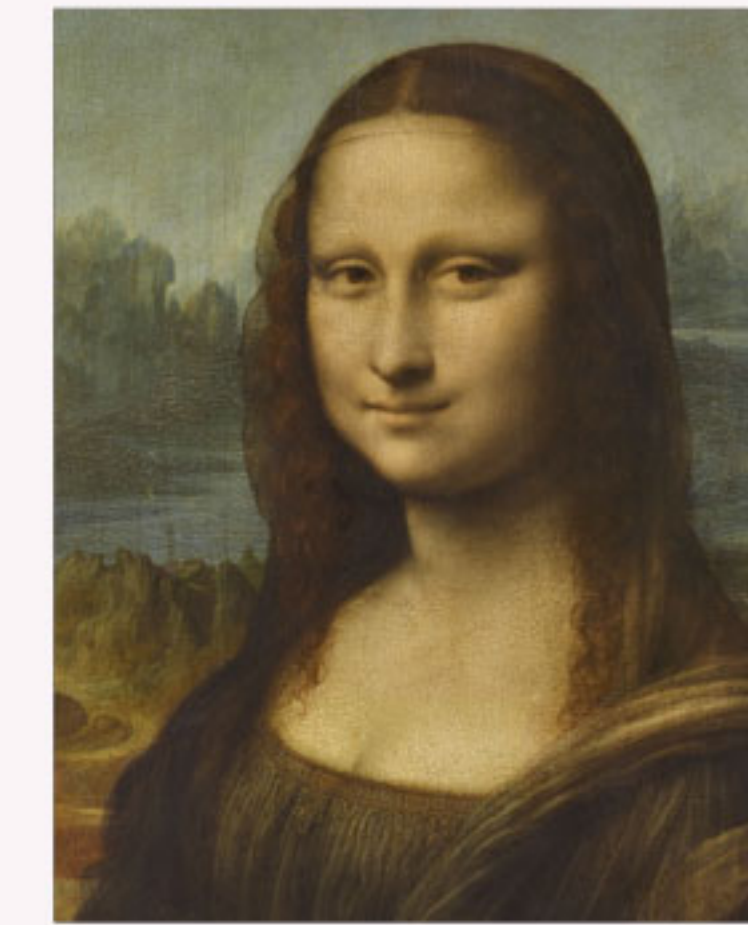
LEVELS -1 AND -2
**Near Eastern
and Egyptian Art**
(30 BC–AD 1800)



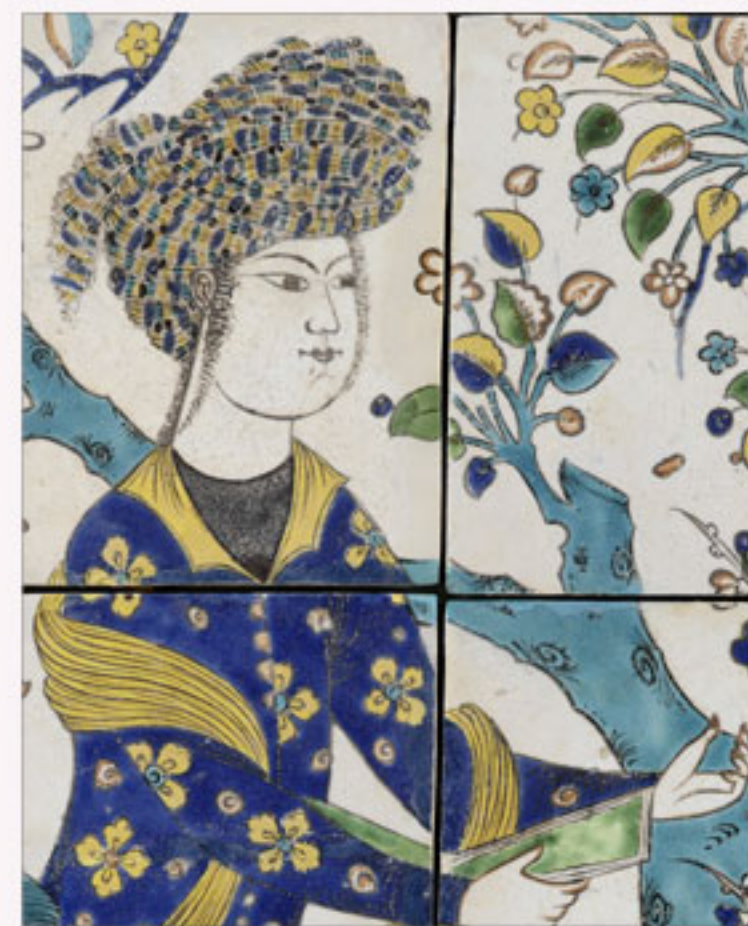
LEVELS -1 AND 0
Sculptures / Europe
(500–1850)



LEVEL 0
**Arts of Africa,
Asia, Oceania and
the Americas**
(700 BC–AD 1900)



LEVEL 1
Paintings / Italy
(1250–1800)



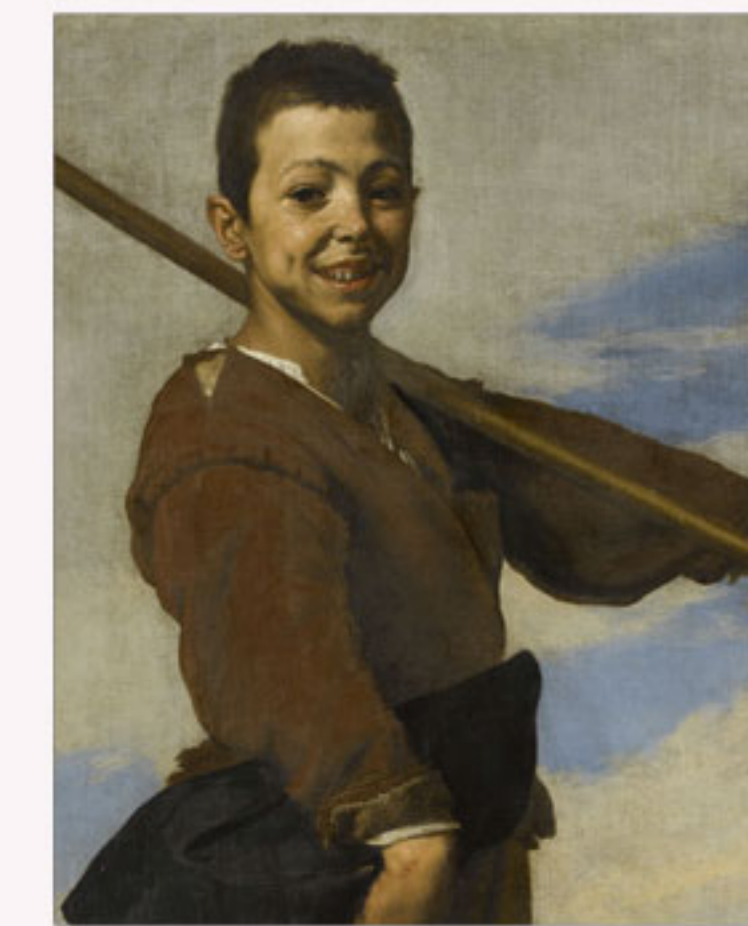
LEVELS -1 AND -2
Islamic Art
(700–1800)



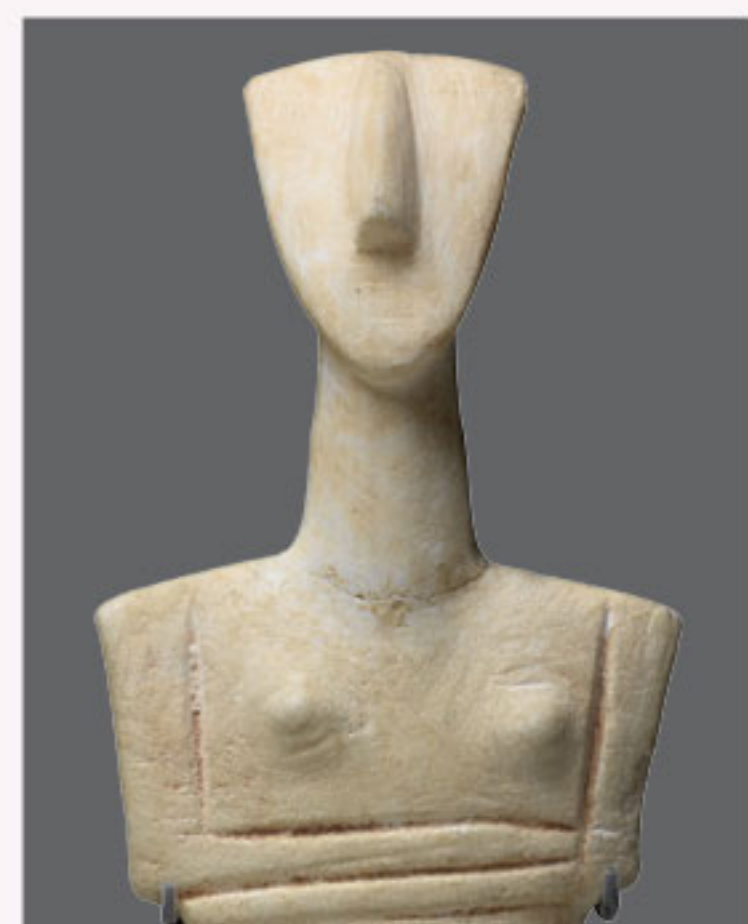
LEVEL 0
Roman Antiquities
(100 BC–AD 500)



LEVEL 1
Paintings / France
(1780–1850)



LEVEL 1
Paintings / Spain
(1400–1850)



LEVEL -1
Greek Antiquities
(6500–500 BC)



LEVEL 0
**Italic and Etruscan
Antiquities**
(900–200 BC)
N.B. Closed from
September 2018!



LEVEL 1
**The Galerie d'Apollon /
The French Crown Jewels**



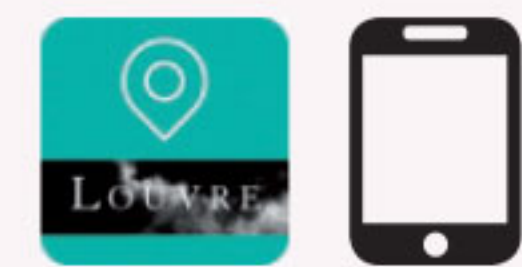
LEVEL 1
**Paintings / Great Britain /
United States**
(1550–1850)
Room 719 in 2018
Room 714 from early 2019

ALSO AT THE LOUVRE...



The Carrousel and Tuileries Gardens

The Carrousel Garden is laid out around the triumphal arch of Napoleon I (reigned 1804–1815), which once marked the entrance to the Tuileries palace. Beyond the Carrousel is the famous Tuileries Garden, a masterpiece of garden design with its beautiful flower beds and shaded groves. The two gardens also form an open-air sculpture museum.



© Musée du Louvre / Olivier Ouadah



The Musée Eugène-Delacroix

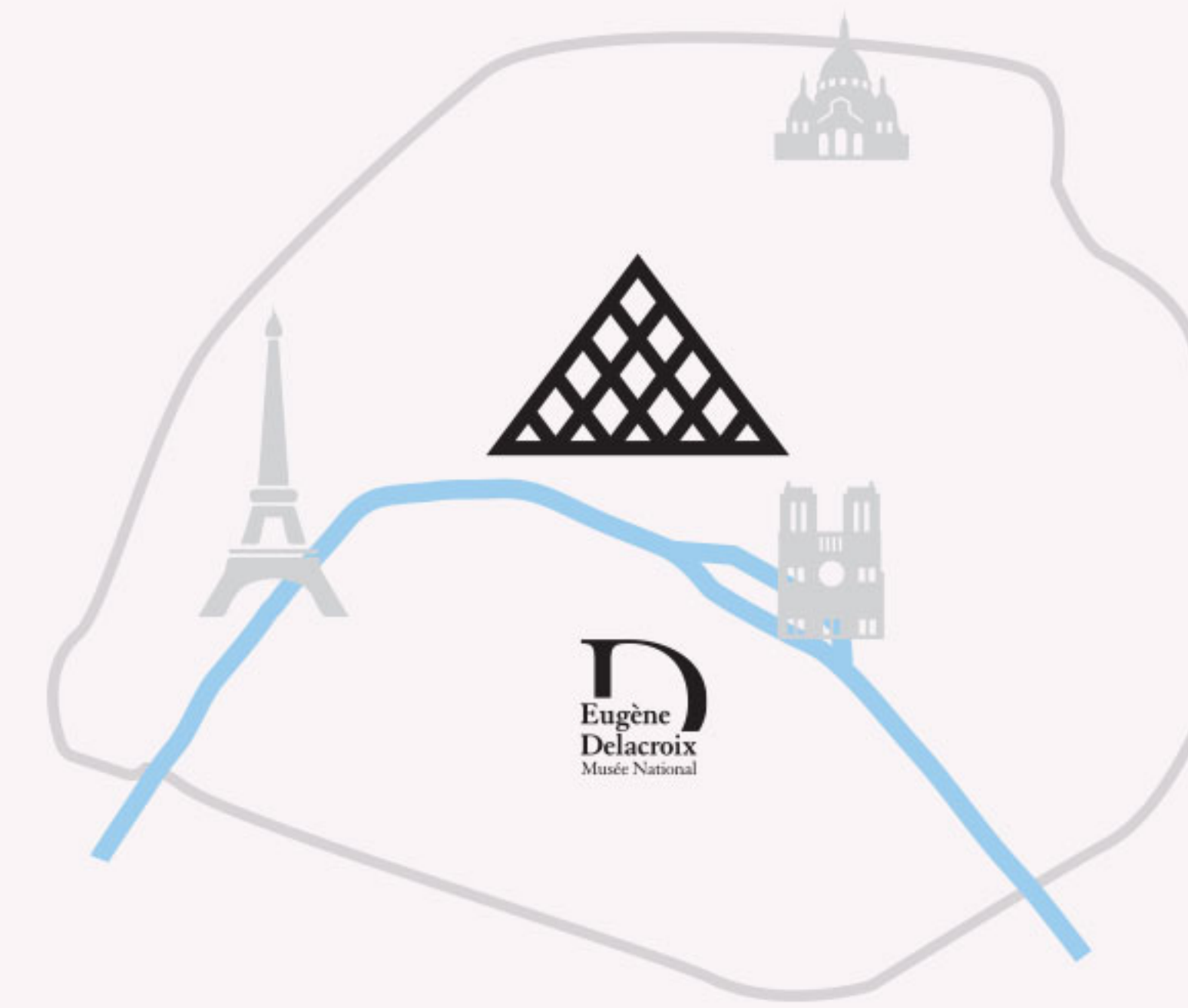


Across the river Seine, at a 15-minute walk from the Louvre, visit the apartment, studio and garden where the painter Eugène Delacroix spent the last years of his life. The museum displays artworks, letters and memorabilia relating to Delacroix.

Admission free for a same-day or next-day visit on presentation of the Louvre admission ticket. Open daily, except Tuesdays, from 9:30 a.m. to 5:30 p.m. and until 9 p.m. on the first Thursday of every month.

6, rue de Furstenberg, 75006 Paris
www.musee-delacroix.fr
 #delacroix

© Musée du Louvre / Antoine Mongodin



From the Louvre to the Carrousel and Tuileries gardens

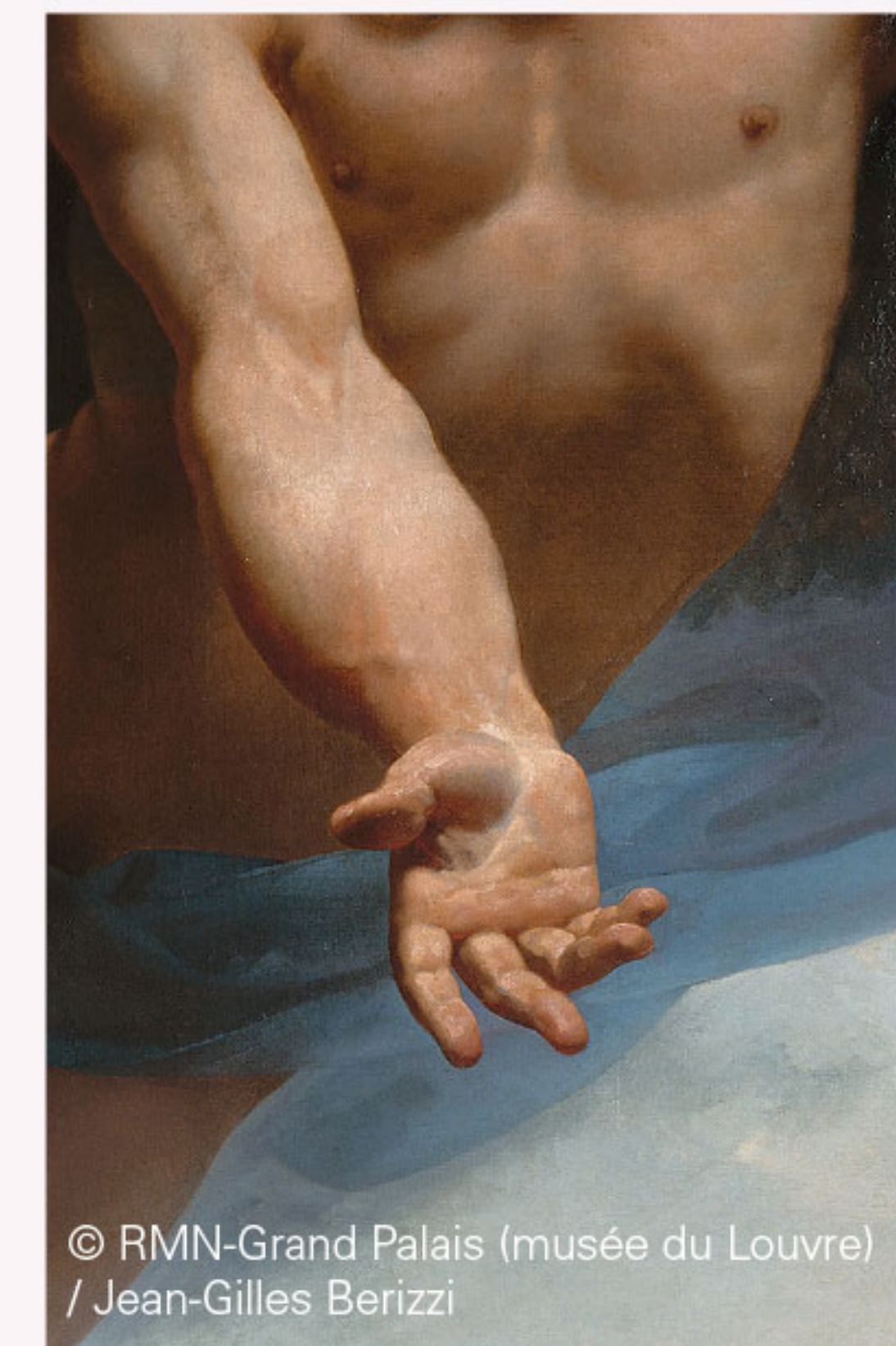
5 minutes

From the Louvre to the Musée Eugène-Delacroix

15 minutes 39 95

SUPPORT THE LOUVRE

Support the activities of the world's greatest museum by making a donation from your smartphone to www.donate.louvre.fr. Thank you for your generosity!



© RMN-Grand Palais (musée du Louvre) / Jean-Gilles Berizzi

American Friends of the
LOUVRE

American Friends of the Louvre – a not-for-profit public charity – was founded to strengthen ties between the Louvre and its American public.

For more information on individual membership programmes or on how to make a gift, go to: www.aflouvre.org.

Photo credits:

Richelieu wing: © 2015 Musée du Louvre / Michel Denancé, © Musée du Louvre, dist. RMN – Grand Palais / Raphaël Chipault, © RMN - Grand Palais (Musée du Louvre) / Stéphane Maréchalle, © Musée du Louvre, dist. RMN - Grand Palais / Hervé Lewandowski, © Musée du Louvre, dist. RMN - Grand Palais / Franck Bohbot, © 1997 Musée du Louvre / Pierre Philibert, © 2006 Musée du Louvre / Angèle Dequier, © RMN - Grand Palais (Musée du Louvre) / Tony Querrec.
Sully wing: © 2016 Musée du Louvre / Michel Denancé, © 2015 Musée du Louvre / Thierry Ollivier, © 2015 Musée du Louvre / Christian Décamps, © Musée du Louvre, dist. RMN - Grand Palais / Georges Poncet, © Musée du Louvre, dist. RMN - Grand Palais / Philippe Fuzeau, © Musée du Louvre, dist. RMN - Grand Palais / Angèle Dequier, © RMN - Grand Palais (Musée du Louvre) / Franck Raux, © RMN - Grand Palais (Musée du Louvre) / Stéphane Maréchalle.
Denon wing: © 2015 Musée du Louvre / Michel Denancé, © RMN - Grand Palais (Musée du Louvre) / Tony Querrec, © RMN - Grand Palais (Musée du Louvre) / Benoît Touchard / Michel Urtado / Tony Querrec, © Musée du Louvre, dist. RMN - Grand Palais / Philippe Fuzeau, © RMN - Grand Palais (Musée du Louvre) / Hervé Lewandowski, © Musée du Louvre, dist. RMN - Grand Palais / Raphaël Chipault, © Musée du Louvre, dist. RMN - Grand Palais / Georges Poncet, © Musée du Louvre, dist. RMN - Grand Palais / Olivier Ouadah, © Musée du Louvre, dist. RMN - Grand Palais / Daniel Lebée et Carine Deambrosis, © 2007 Musée du Louvre / Angèle Dequier, © RMN - Grand Palais (Musée du Louvre) / Jean-Gilles Berizzi, © musée du Quai Branly, Dist. RMN-Grand Palais.

Graphic design: Dream On / Museum Gallery Interpretation Subdepartment / Graphic and Digital Interpretation Division
 Printing: Vincent Imprimerie, May 2018.

In accordance with the Louvre's sustainable development policy, this document is printed on 100% recycled paper.

-2

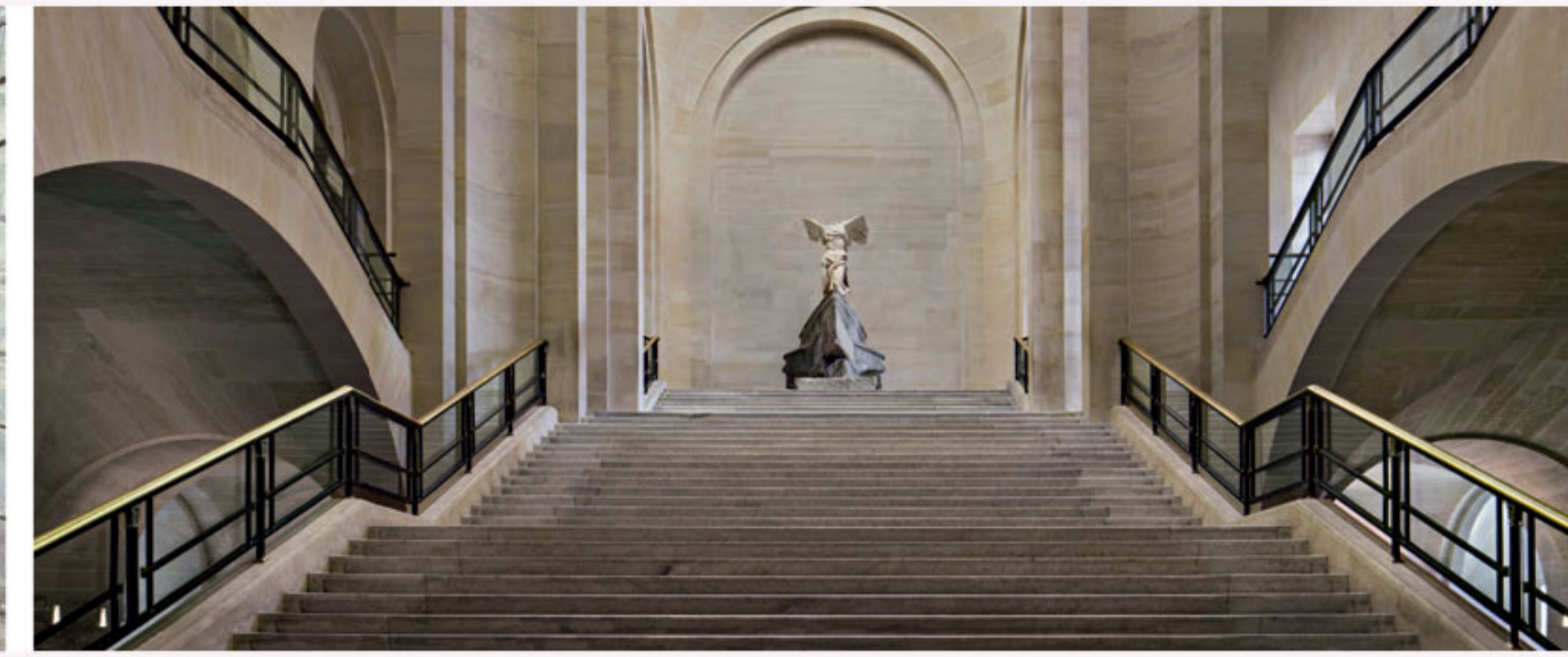
RECEPTION AREA AND EXHIBITIONS



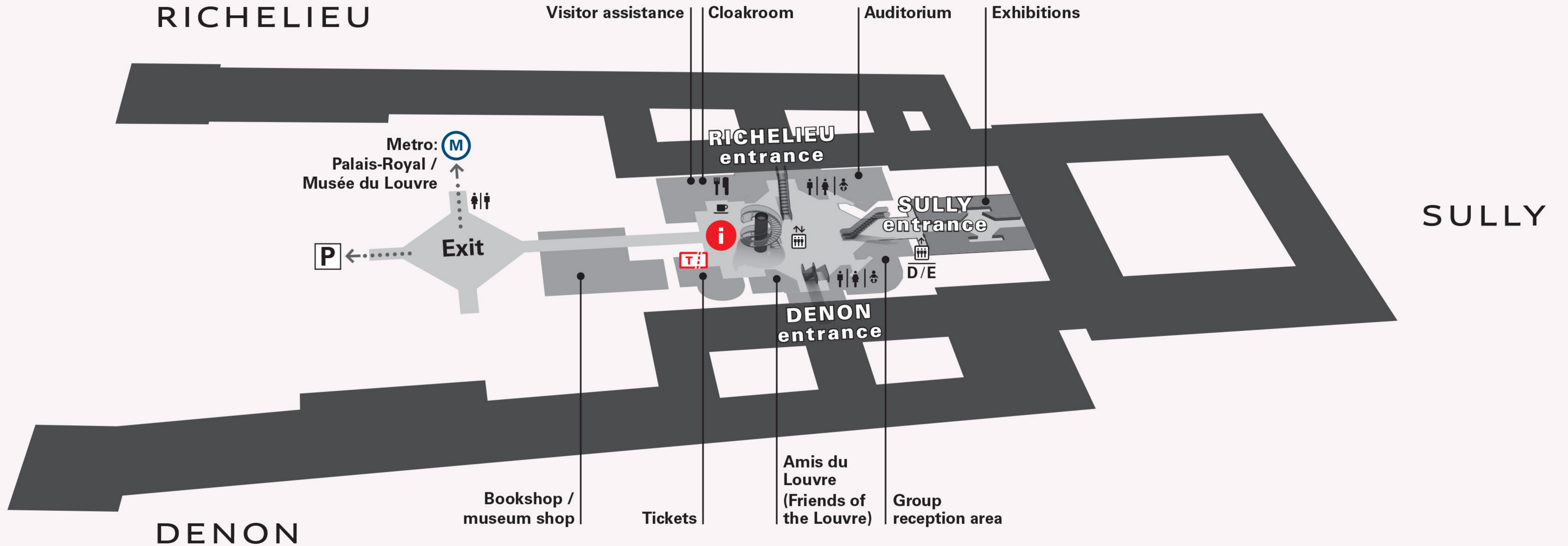
RICHELIEU



SULLY



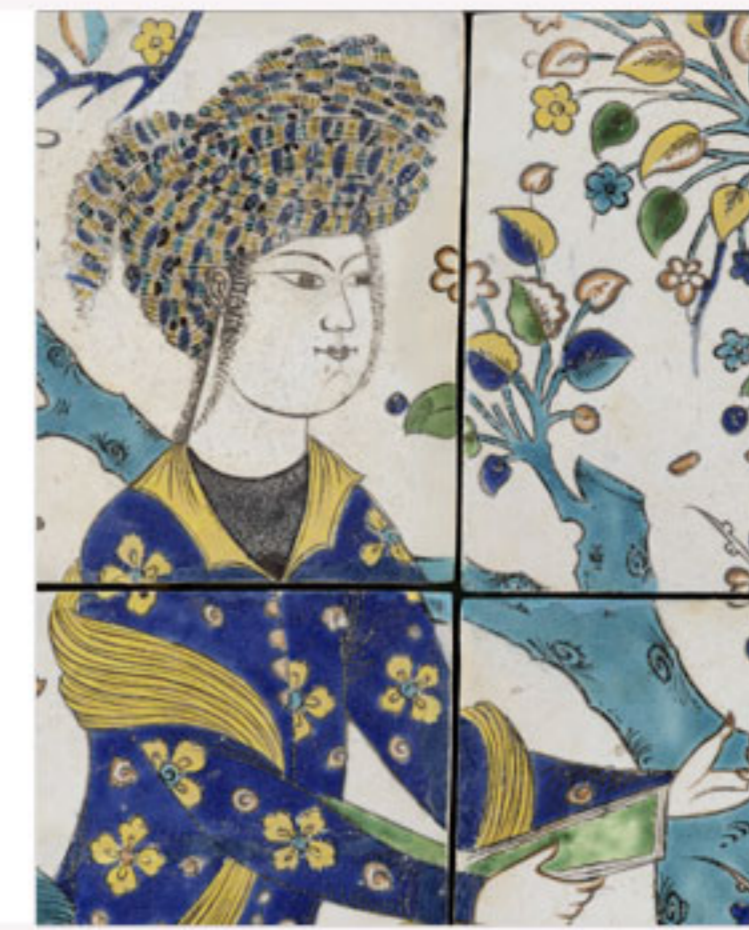
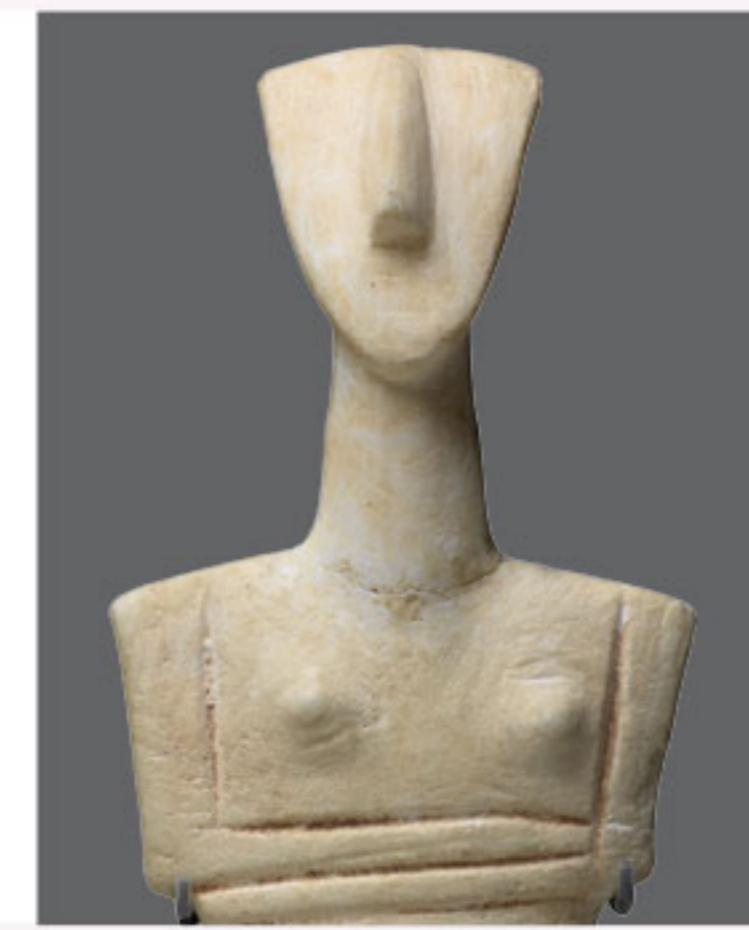
DENON



-1

MUSEUM AND EXHIBITIONS

Petite Galerie!



Room 101

Room 102

Room 131

Room 133

Room 170

Room 186

Room 183

Room 169

RICHELIEU Rooms 100 to 106

Sculptures / France
1600–1700

Cabinet of Prints
and Drawings

Greek Antiquities
6500–500 BC

The Pavillon de l'Horloge
From palace to museum

The Petite Galerie

Touch Gallery

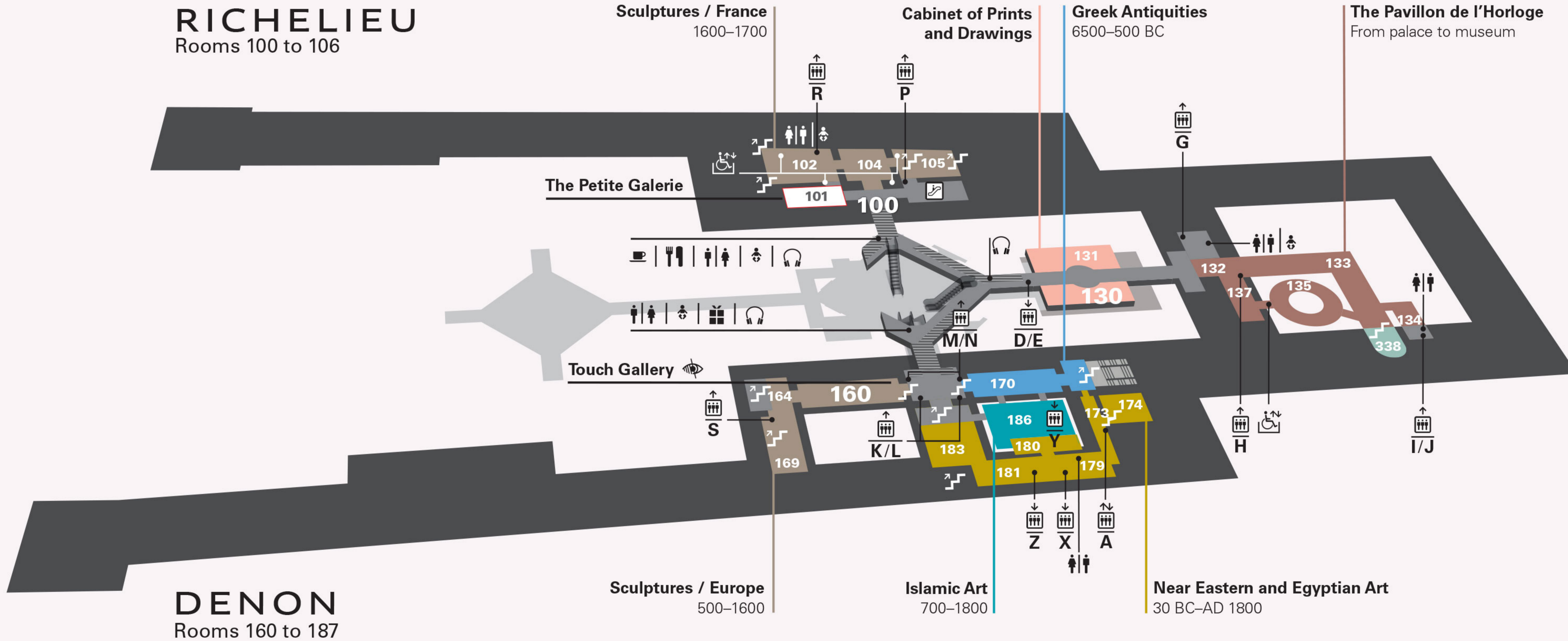
SULLY Rooms 130 to 137

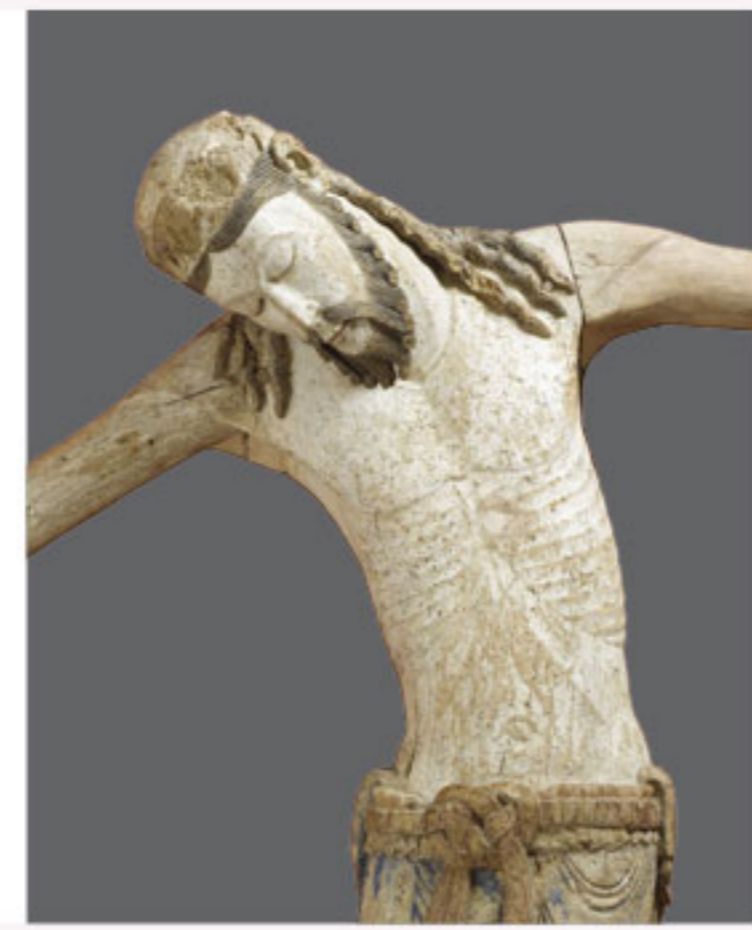
DENON Rooms 160 to 187

Sculptures / Europe
500–1600

Islamic Art
700–1800

Near Eastern and Egyptian Art
30 BC–AD 1800





Room 201



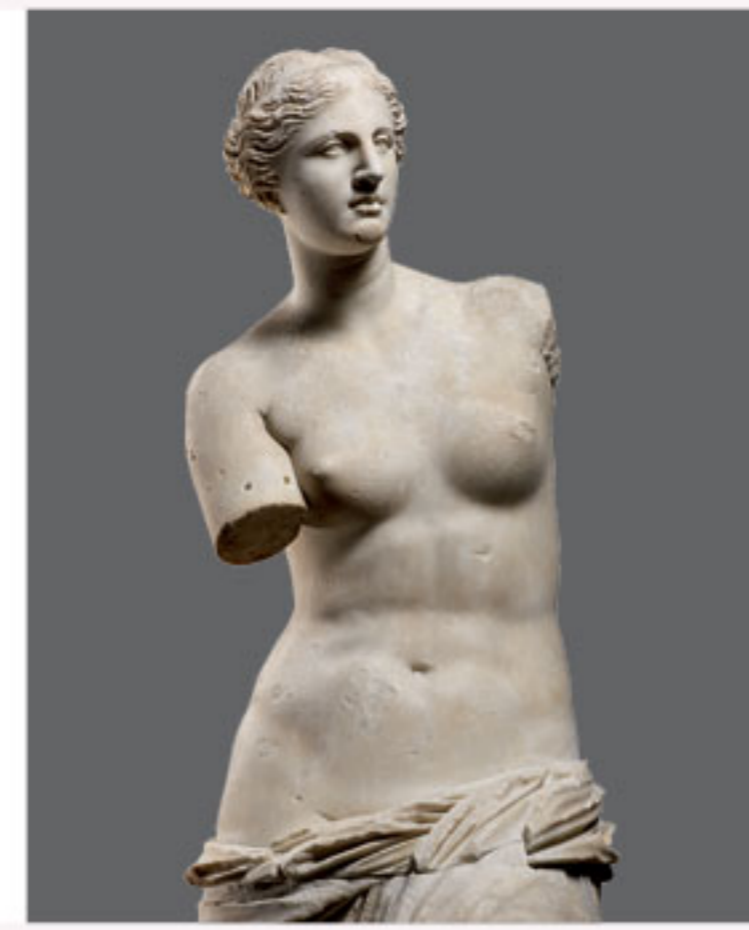
Room 236



Room 308



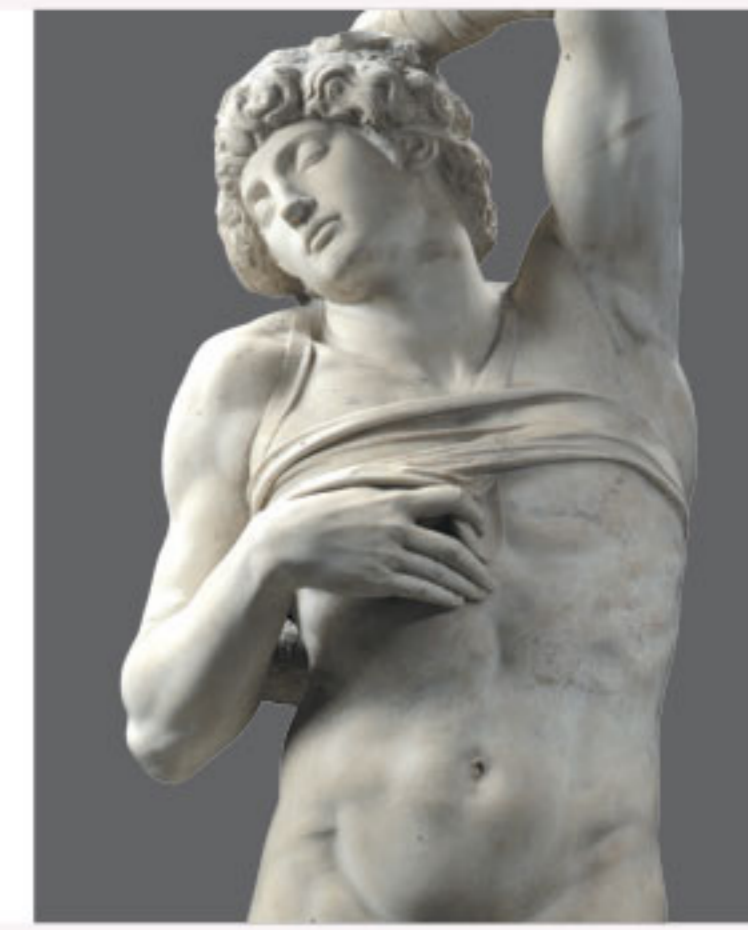
Room 321



Room 345



Room 410



Room 403



Room 427

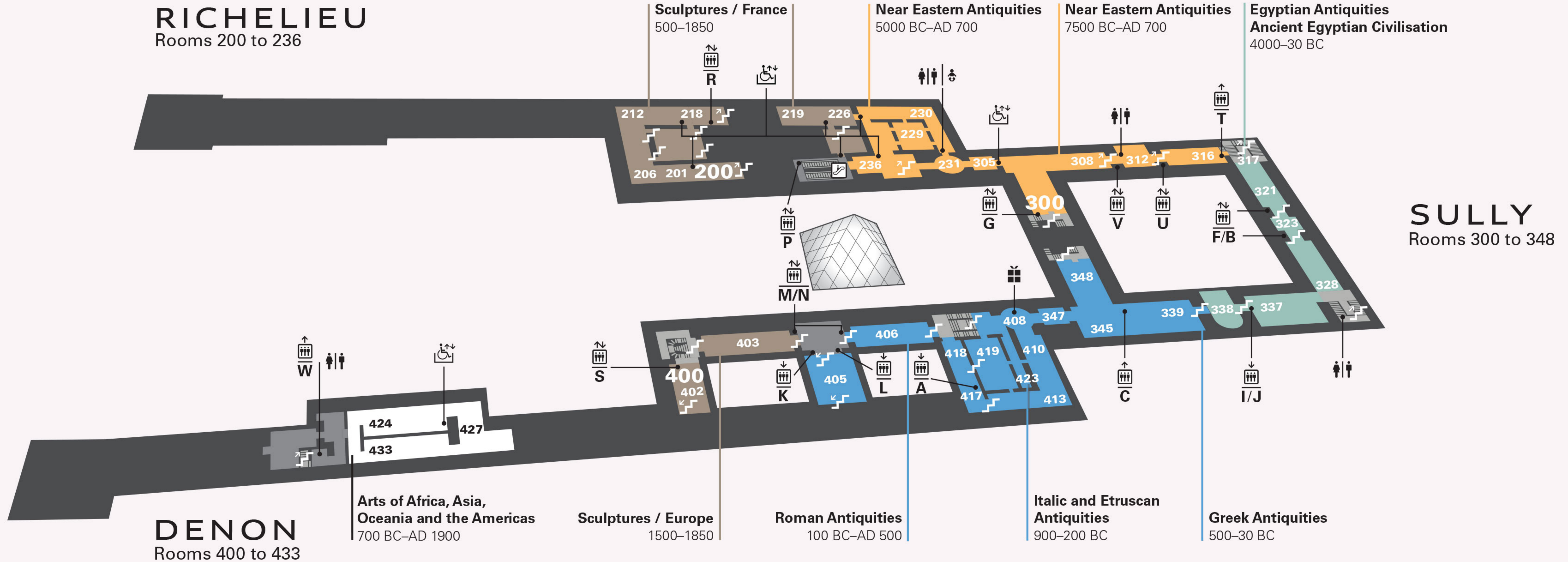
RICHELIEU
Rooms 200 to 236

Sculptures / France
500–1850

Near Eastern Antiquities
5000 BC–AD 700

Near Eastern Antiquities
7500 BC–AD 700

Egyptian Antiquities
Ancient Egyptian Civilisation
4000–30 BC



SULLY
Rooms 300 to 348

DENON
Rooms 400 to 433

**Arts of Africa, Asia,
Oceania and the Americas**
700 BC–AD 1900

Sculptures / Europe
1500–1850

Roman Antiquities
100 BC–AD 500

**Italic and Etruscan
Antiquities**
900–200 BC

Greek Antiquities
500–30 BC

1

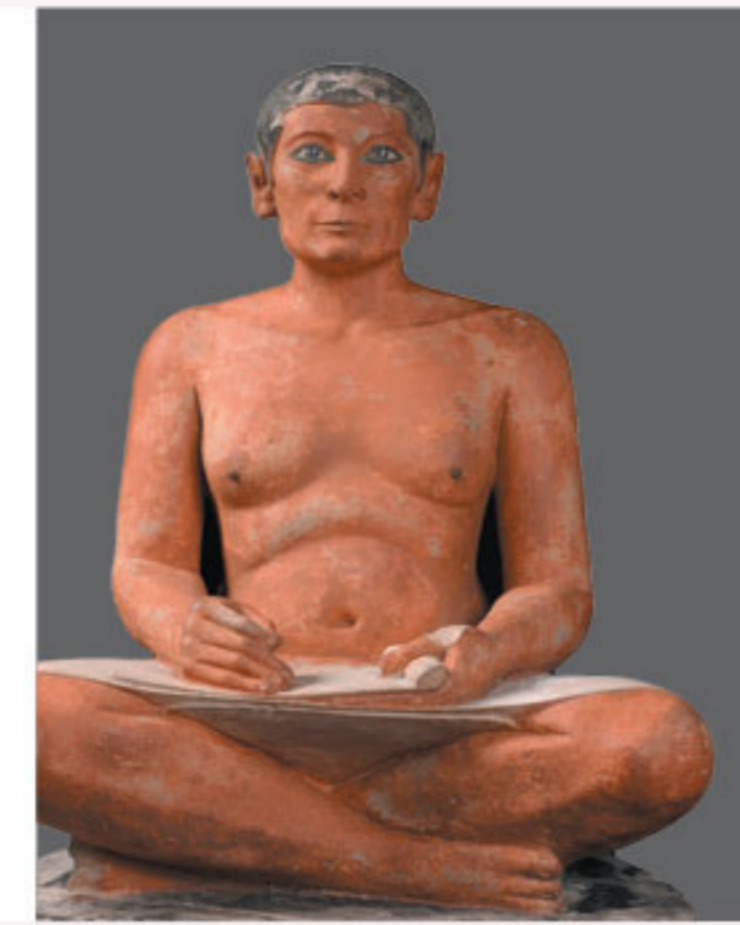
MUSEUM



Room 544



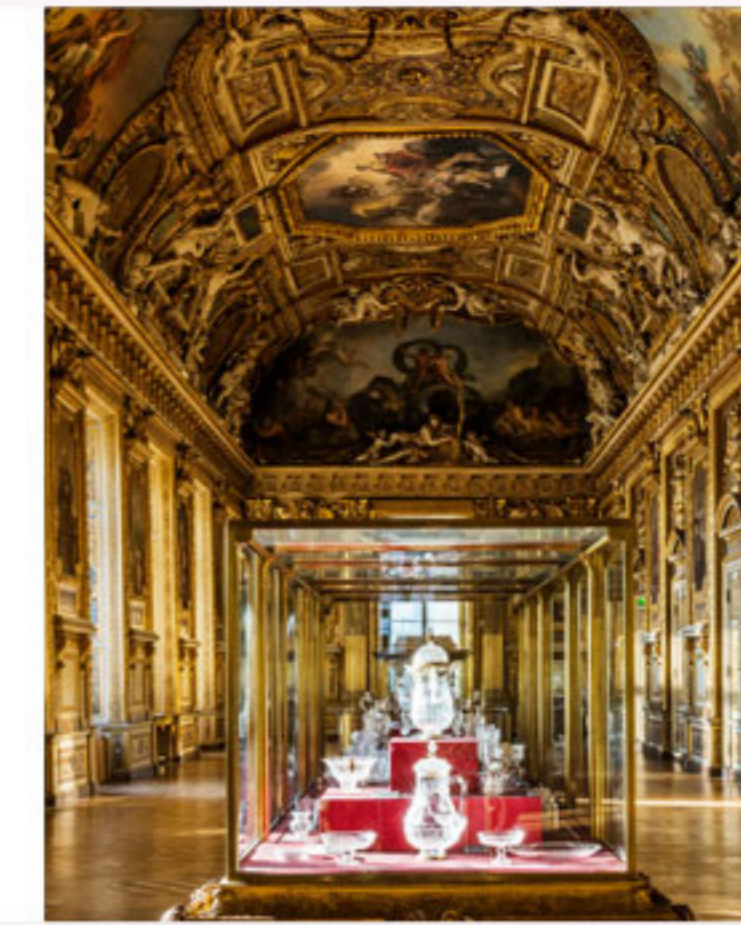
Room 503



Room 635



Room 703



Room 705



Room 700



Room 711



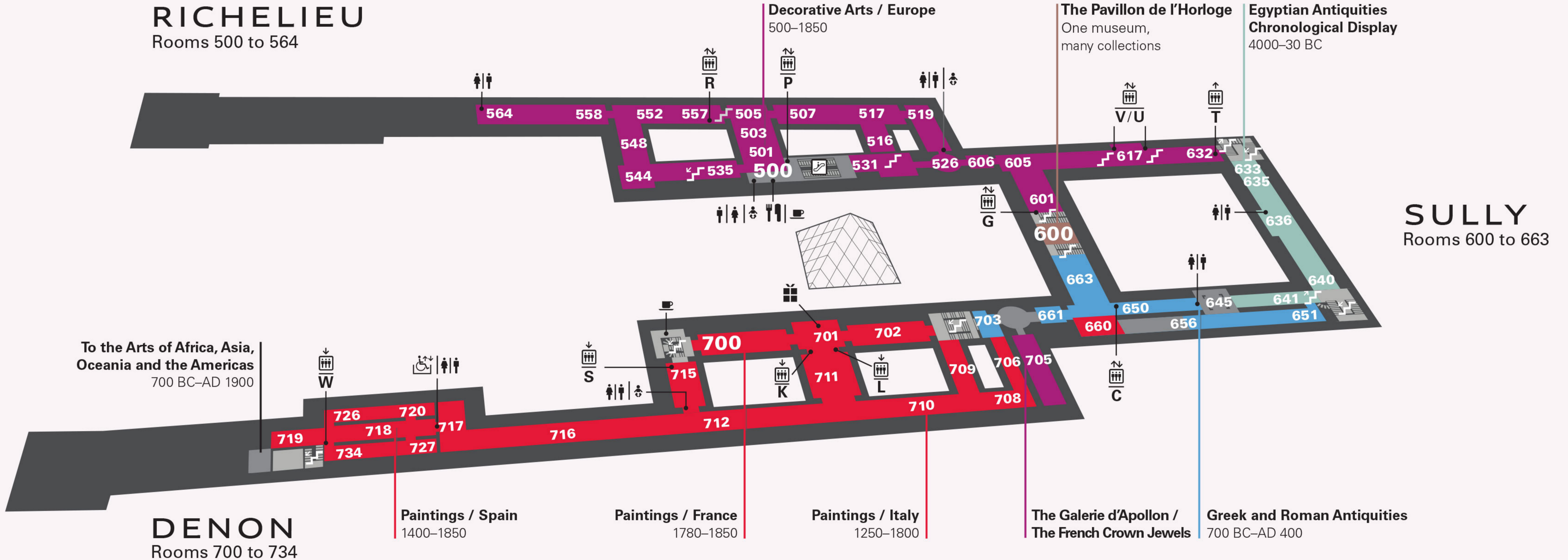
Room 718

RICHELIEU Rooms 500 to 564

Decorative Arts / Europe 500–1850

The Pavillon de l'Horloge One museum, many collections

Egyptian Antiquities Chronological Display 4000–30 BC



SULLY Rooms 600 to 663

DENON Rooms 700 to 734

Paintings / Spain 1400–1850

Paintings / France 1780–1850

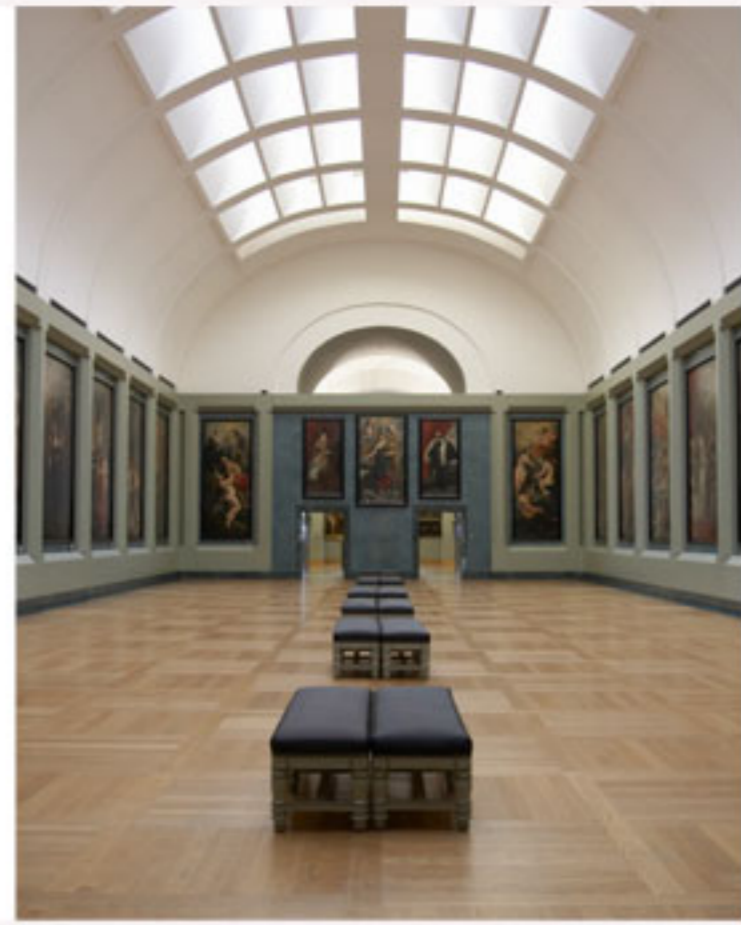
Paintings / Italy 1250–1800

The Galerie d'Apollon / The French Crown Jewels

Greek and Roman Antiquities 700 BC–AD 400

2

MUSEUM



Room 801



Room 822



Room 837



Room 811



Room 912



Room 917



Room 940



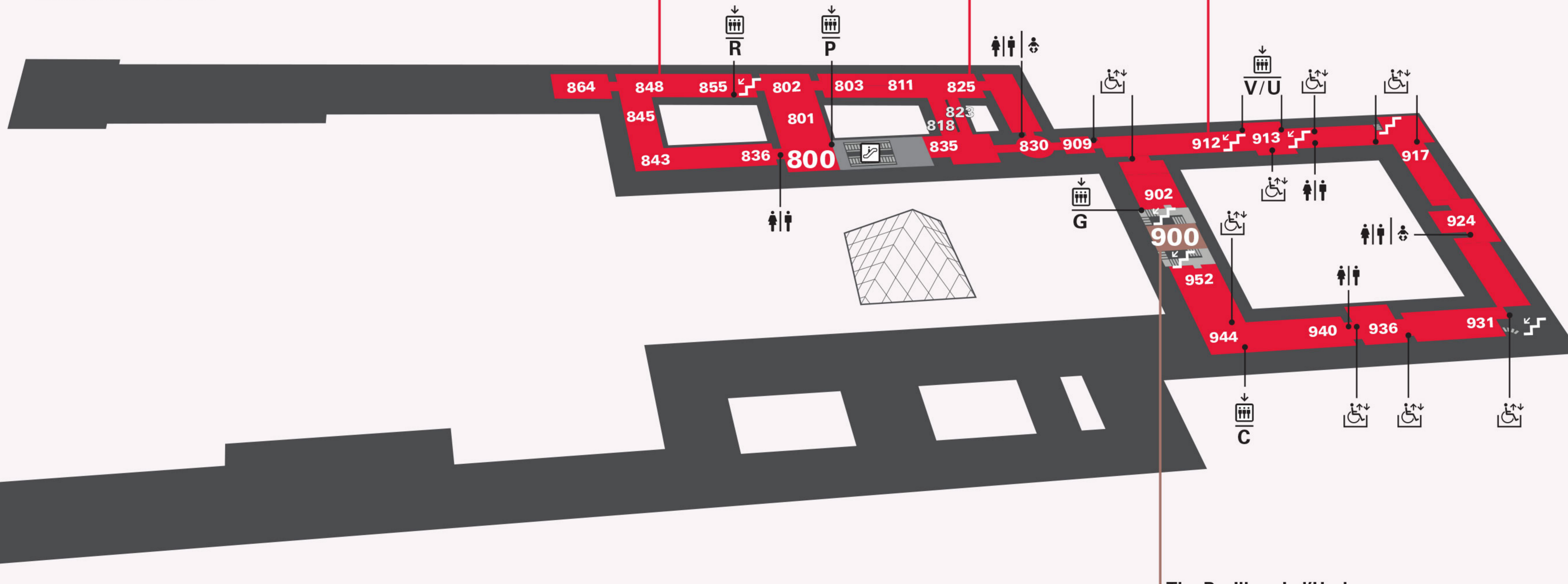
Room 952

RICHELIEU Rooms 800 to 864

Paintings / Northern Europe
1350–1850

Paintings / France
1350–1650

Paintings / France
1650–1850



SULLY Rooms 900 to 952

DENON

The Pavillon de l'Horloge
The Louvre today and tomorrow